

Back

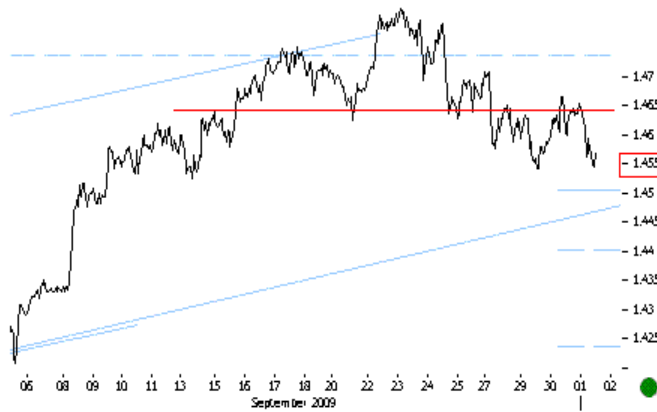


GLOBAL

EUR/USD - 1.4552
 GOLD - 1004.00
 DOW - 9742.20
 OIL - 67.81

TICKS
 GLOBAL
 Orpheus CAPITALS

01 OCT 2009 - INTRA DAY SERVICES



01 OCT 09 14:46 EUR 60MIN As anticipated the neckline at 1.465 levels held and prices continue to move to lower targets at 1.45.

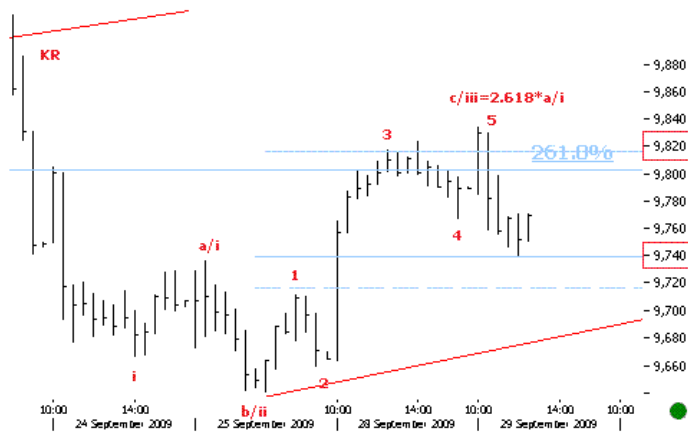


14:33 DOW 60MIN This seems to be the start of a iii wave lower. A break at 9,600 should lead to a free fall till 9,000.

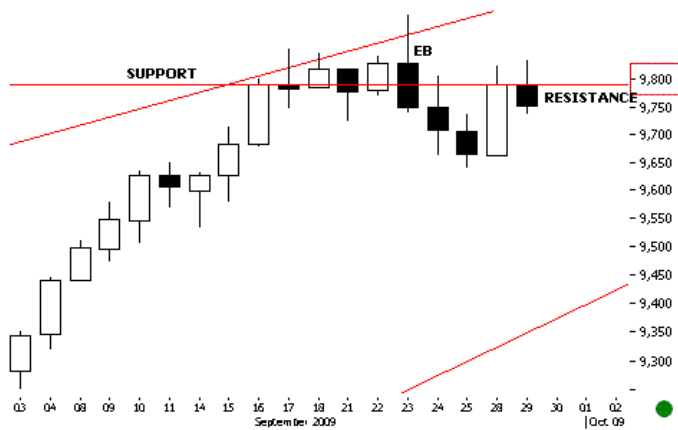
MARKET OPEN. GMT 12:15 GOOD MORNING. DOW continues to stagnate near 9,800 levels. We continue to look for a break down soon. A break at 9,600 will confirm our negative view. As anticipated GOLD subminor pushed up from 980-990 levels to 1,000. We see the push up till 1,022 and higher. A negative DOW could only strengthen the positive case on GOLD. OIL pushed below psychological 70. Minor trend remains negative and bounce backs should be corrective countertrends. We are looking at sub 60 levels on OIL. EUR DOLLAR KEY REVERSAL which we highlighted has pushed the pair lower till 1.4552 levels. Overall the global markets remain at key inflexion points as we start OCTOBER (Seasonally weak time). WATCH FOR KEY LEVELS. TRADE SAFE.



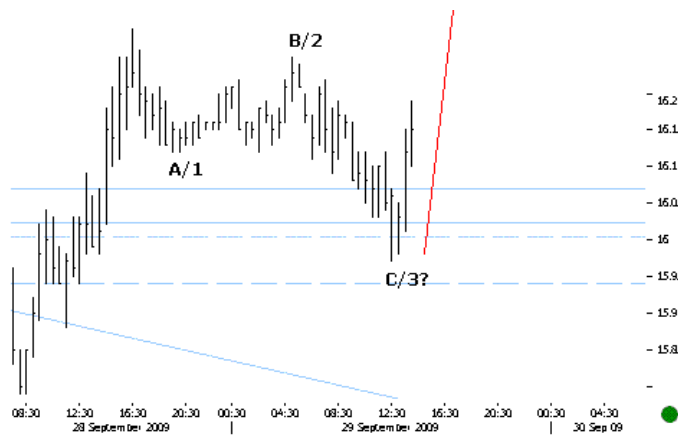
01 OCT 09 - 12:10 DOW 60MIN Prices start the iii subminor leg lower. Sub 9,600 we get further negative confirmation.



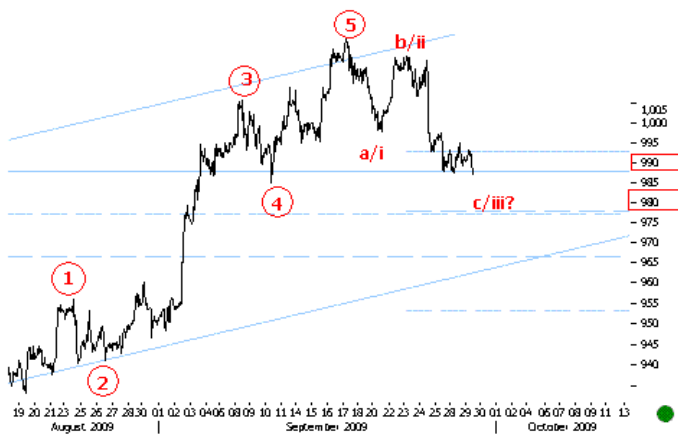
29 SEP 09 - 15:18 DOW KEY PRICE RANGE The preferred negative view considers the expanded flat a-b-c over at 9,820 where c wave equals 2.618 of wave a. A break here at 9,820 will suggest that prices are heading clearly through 10,000. A push below 9,720-9,740 will strengthen the negative view.



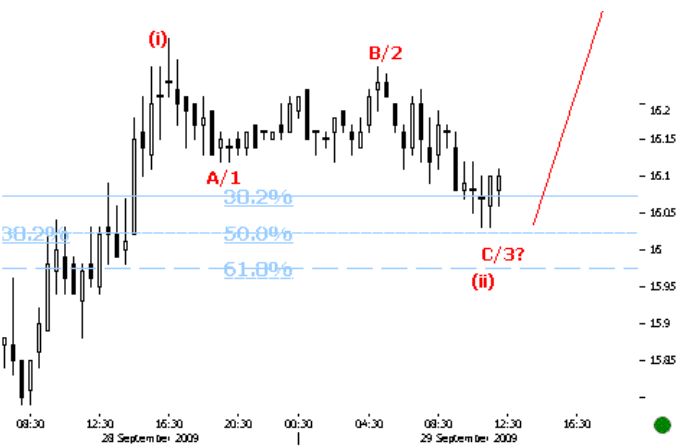
29 SEP 09 - 15:02 DOW DAILY DOW support at 9,800 becomes resistance.



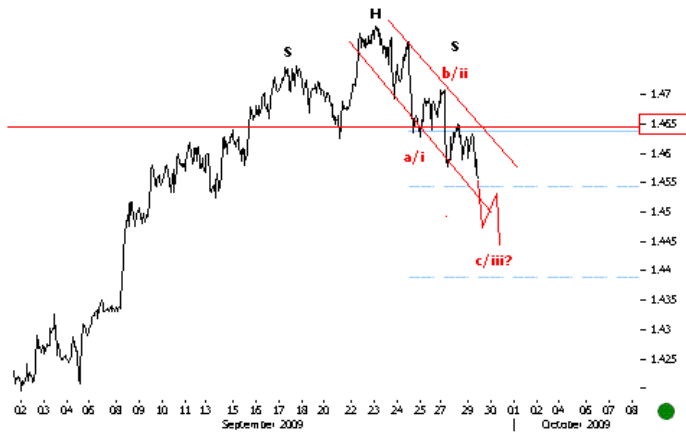
29 SEP 09 - 15:48 SILVER 30MIN
...starts the leg up to 16.



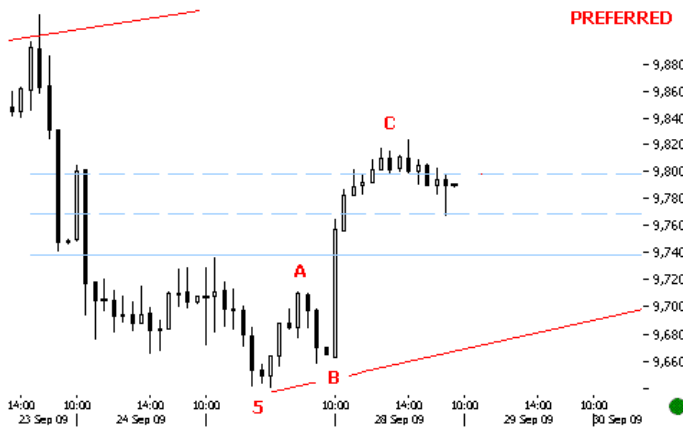
29 SEP 09 - 13:19 GOLD 60MIN The move down seems incomplete. Prices could push lower back into previous 4 levels at 980 levels before turning up. We continue to look at the current move as a countertrend corrective.



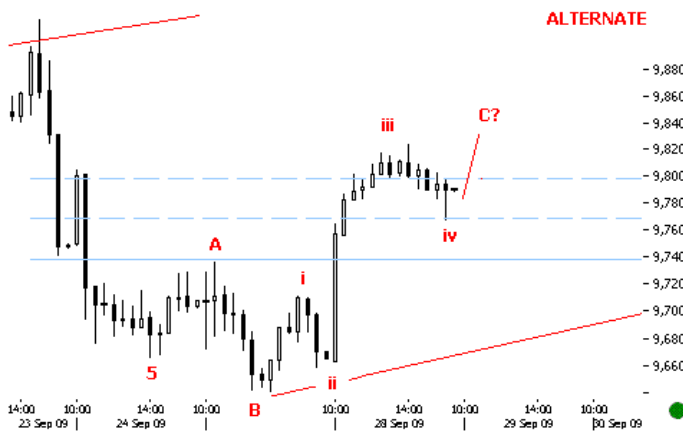
12:40 SILVER 30MIN The corrective down seems complete. FIB 0.5 levels at 16 should offer support. The iii wave should take prices up till 16.5.



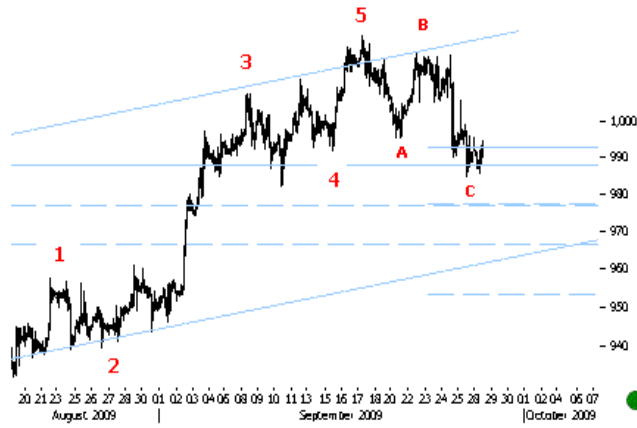
29 SEP 09 - 12:15 EURUSD 60MIN The conventional head and shoulder neckline continues to hold. Prices could also be moving in a fast c/iii lower till 1,44.



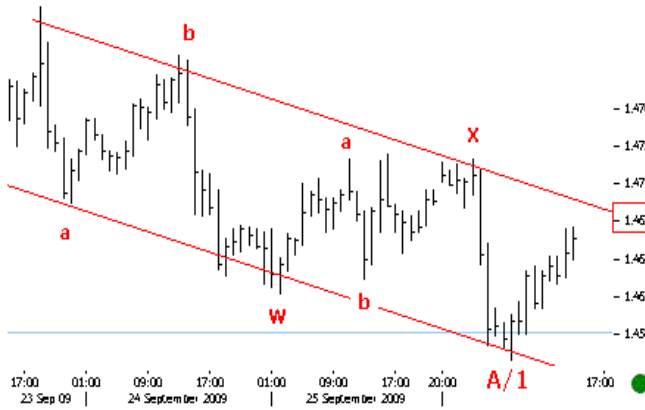
29 SEP 09 15:59 DOW 30MIN Preferred view. The corrective structure A-B-C is complete.



29 SEP 09 15:59 DOW 30MIN Alternate view. Completing C wave up.



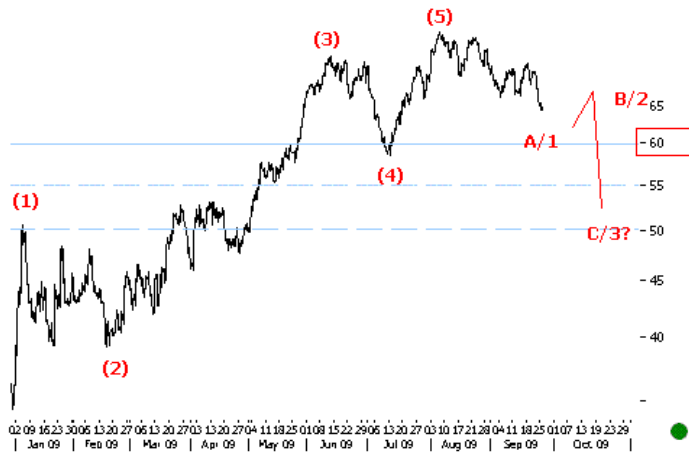
28 SEP 09 14:21 GOLD 60MIN Above 980-990 previous four support we continue to look higher.



28 SEP 09 13:39 EURUSD 60MIN Above 1.467 the first leg of the correction down can be considered complete after which the prices should start the B/2 leg up. Overall the trend remains down.



28 SEP 09 13:13 EURUSD 30MIN A break of the Head and Shoulder neckline at 1.465 is negative.



28 SEP 09 - 12:57 BRENT 60MIN 60 just seems a first target of the A leg down. Oil could be in for a larger dip till 55.



11:49 28 SEP 09 DAX DAILY Prices make two successive KEY REVERSAL bars suggesting high suply presure ahead. Key support lies at 5,550. A break here should confirm negativity.



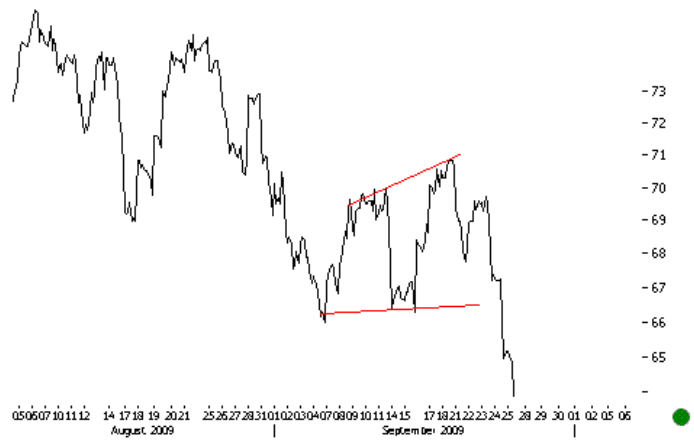
28 SEP 09 - 11:25 NIKKEI Prices break down the intermediate channel supports.



25 SEP 09 - 14:35 DOW DAILY Key levels lie at 9,600. A break here could undermine the rise from JULY.

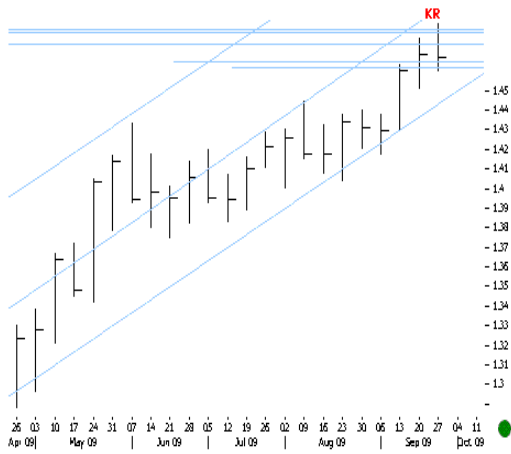


25 SEP 09 - 13:56 DAX - DAILY Prices push to key inflexion...



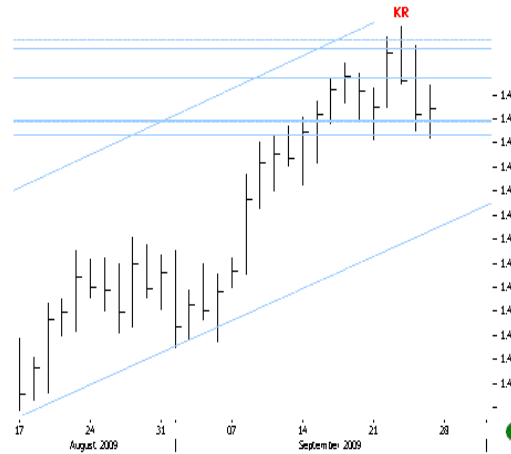
25 SEP 09 - 11:22 BRENT 60MIN Brent cracks

25 SEP 09 - 13:15

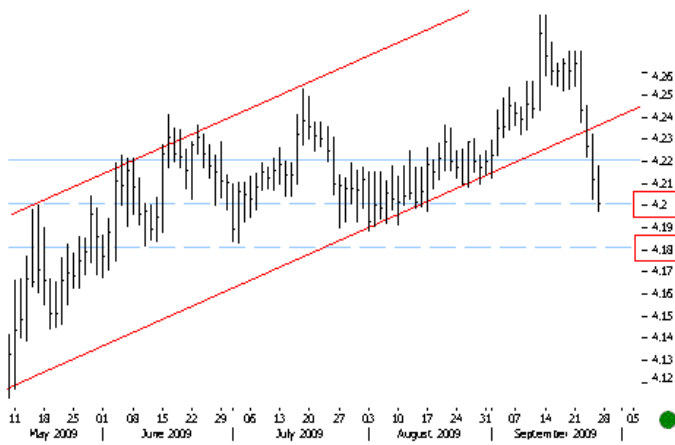


Weekly KEY REVERSAL bar...

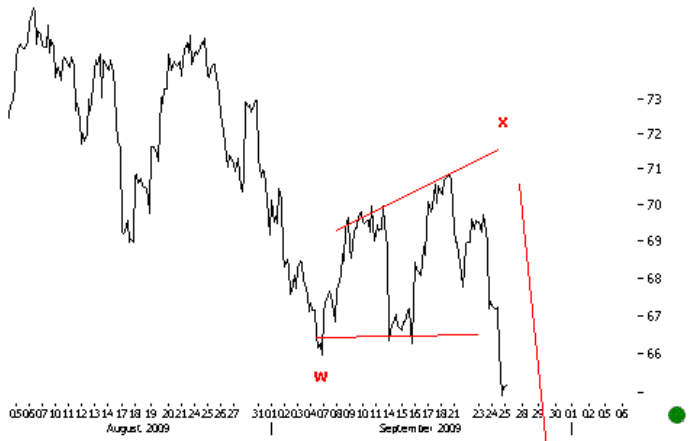
25 SEP 09 - 13:11



accompanied by daily KEY REVERSAL bar....



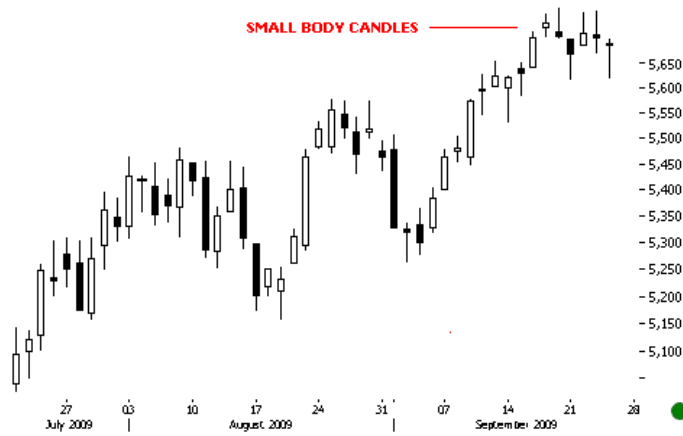
25 SEP 09 - 13:59 EURRON DAILY Key levels to watch lie at 4.18. A break here would take the currency to previous lows at 4.109 and possibly lower. A break at 4,18 could also indicate positivity on local equity indices and stocks.



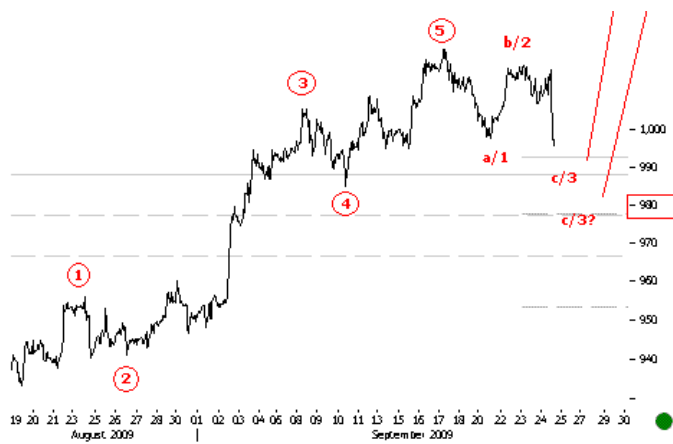
25 SEP 09 11:22 BRENT 60MIN The y wave continues to point lower.



25 SEP 09 - 10:42 DAX DAILY As anticipated the small body candle indecision lead to initial cracks in DAX. A break at 5,550 will confirm intermediate negativity.



24 SEP 09 - 12:03 DAX DAILY ANTICIPATED Small body candles continue to highlight indecision.



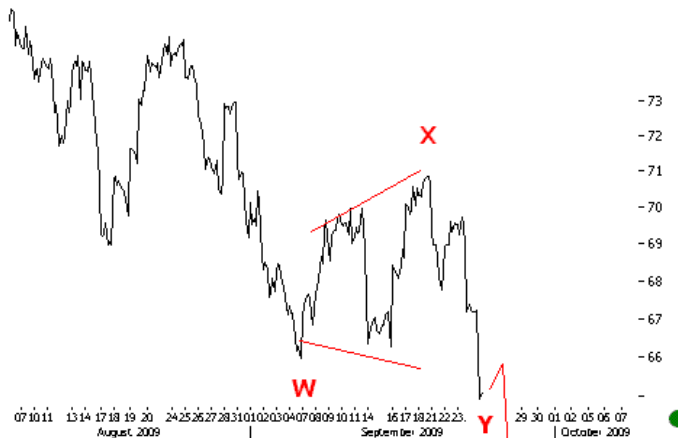
24 SEP 09 - 17:22 GOLD 60 MIN The move down on GOLD still looks like a corrective. Above 980-990 levels the previous 4 supports keep us looking higher on GOLD. Below 980 our preferred minor positive view on GOLD is challenged.



24 sep 09 - 16:03 EURO DOLLAR 60MIN Prices break down intermediate channels and head lower to first FIB targets at 1.465. Sub 1.465 FIB projections point lower till 1.455.



24 SEP 09 - 16:40 DOW 60MIN Prices break key 9750 levels. Immediate targets lie at 9,650. A break here should confirm the start of the intermediate (multi week) negativity.



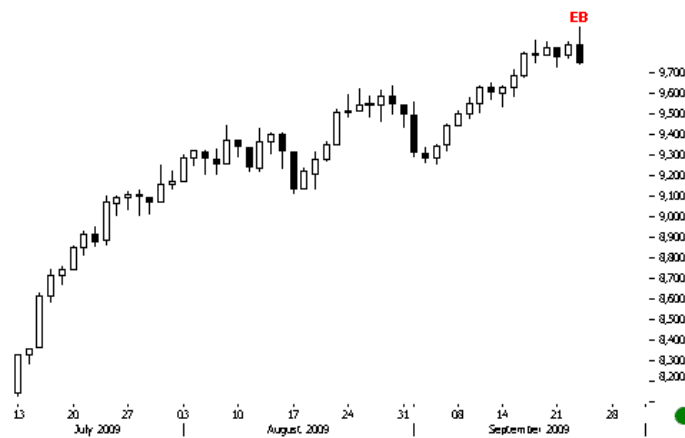
24 SEP - 09 16:35 BRENT 60MIN Prices push down as anticipated.



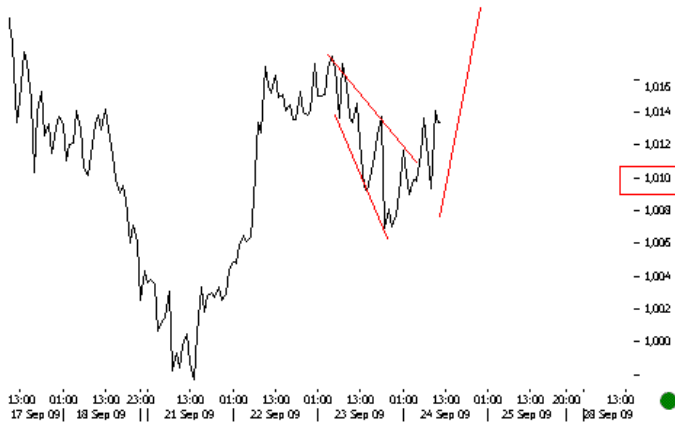
24 SEP 09 - 14:28 BRENT 60MIN OIL is ready to breakdown below JULY lows at 66



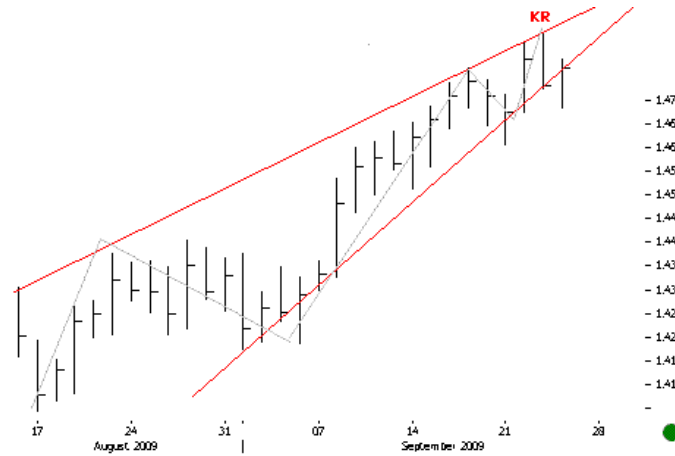
13:21 24 SEP 09 GOLD DAILY The primary view on GOLD suggests a completing B multi month primary wave. Above 1000 we continue to see the impulse UP till 1100.



13:00 DOW DAILY Engulfing Bearish points to a potential top at current highs.



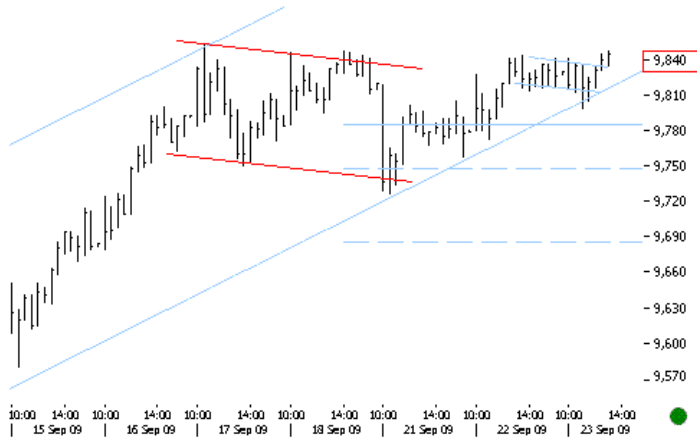
24 SEP 09 - 12:45 GOLD 60MIN Prices continue to hold above key supports at 1005-1007. Minor trend remains up.



24 sep 09 - 12:23 EUR DOLLAR DAILY The KEY REVERSAL bar continues to hold suggesting negativity. Sub 1.484 we continue to look lower. The five wave impulse up also seems complete.



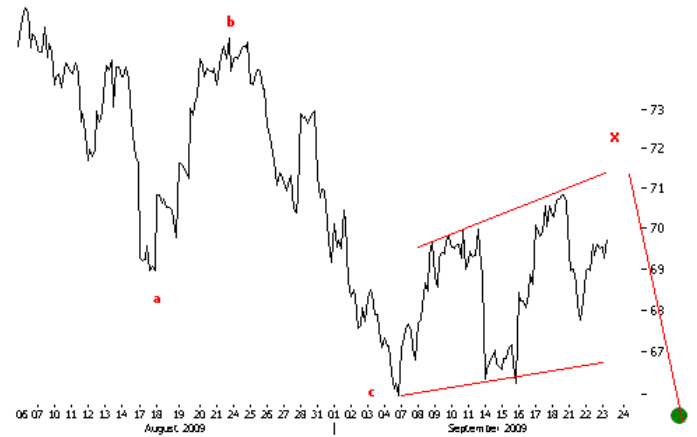
24 SEP 09 - 12:11 EURRON PREFERRED FLAT We think EURRON is completing a CYCLE DEGREE FLAT and after a last bout of weakness till around 4.5 will reverse in secular strength back to 3.



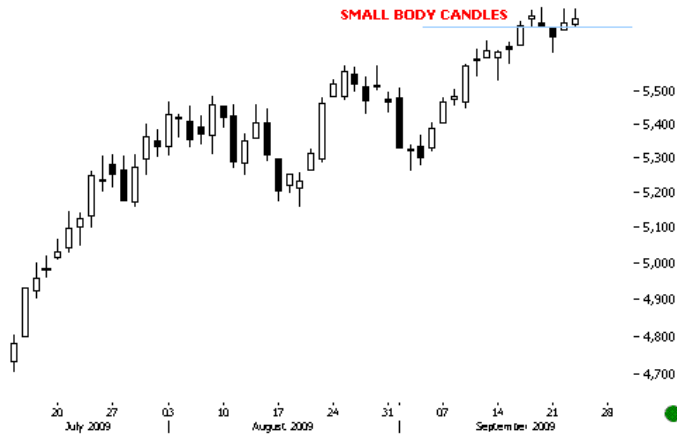
23 SEP 09 - DOW 30MIN Prices are back at previous highs at 9,850.



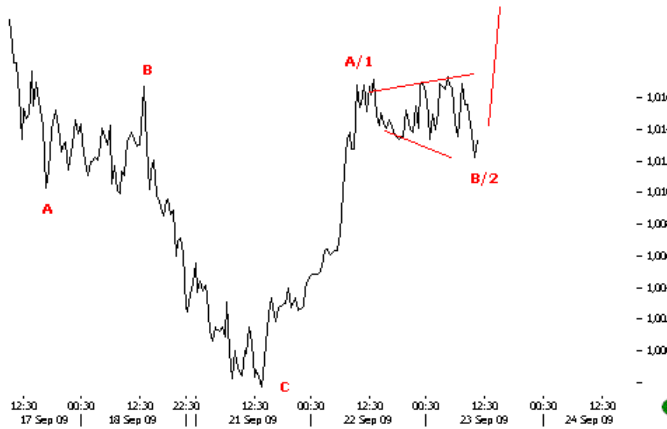
16:52 BRENT 60MIN Prices push lower sub 70 again. A break at 67 will confirm negativity lower till 60.



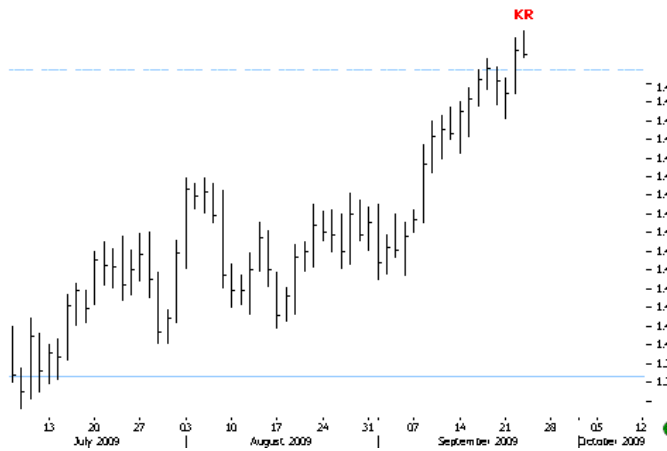
12:48 OIL 60MIN Prices are moving in a complex corrective. Even if the X wave up pushes marginally back above 70, the overall formation still points lower.



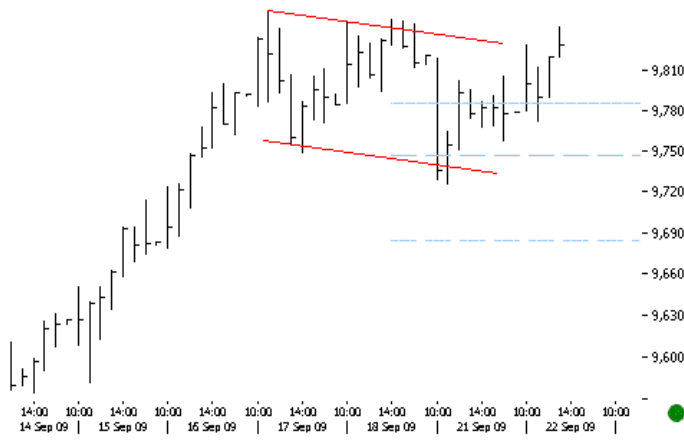
23 SEP 09 - 12:25 DAX DAILY On a stand alone basis, small body candles are not reversal signals, but they do highlight indecision. And indecision after a multi month rise does not increase positivity. 5,700 is also a KEY FIB projection.



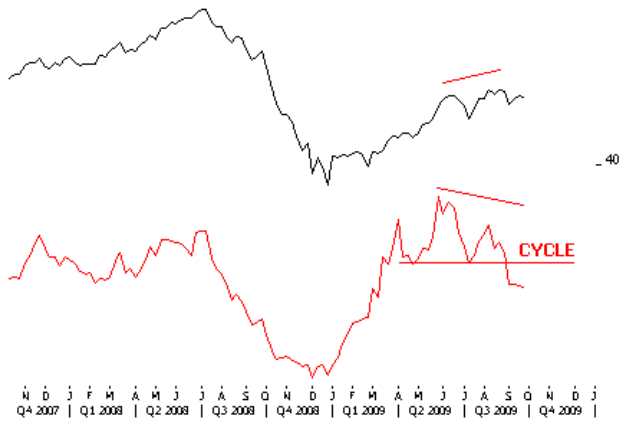
23 SEP 09 - 12:00 GOLD 30MIN Even if we are in a MINOR corrective, a push back to 1022 and higher seems in.



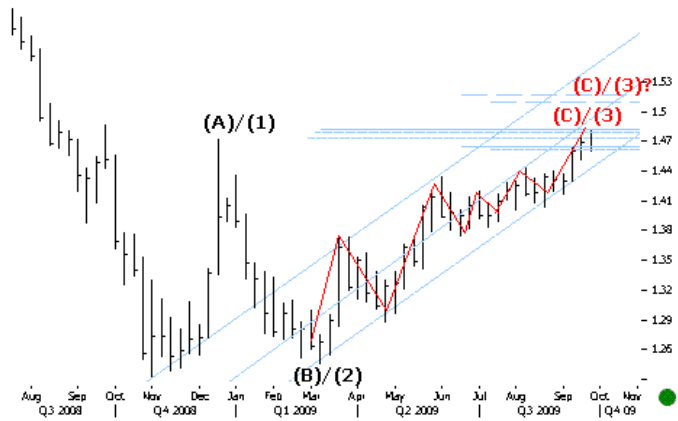
23 SEP 09 - 11:32 EUR= DAILY EURO USD makes a daily KR (key reversal bar).



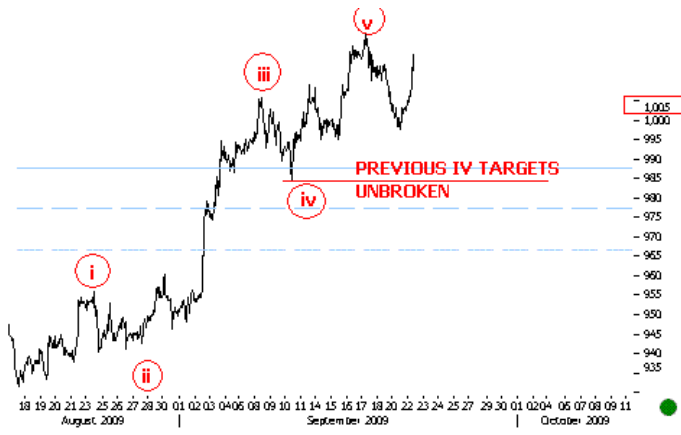
22 SEP 09 - 17:52 DOW 60MIN Prices move up as anticipated.



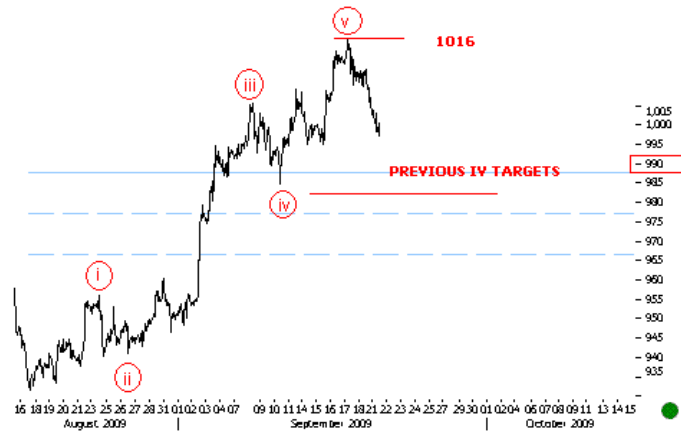
22 SEP 09 - 13:54 BRENT WEEKLY ROC illustrate time cycles well. Here we have a classic turn down on cycle with a non confirmation. OIL view remains negative till 60 for us.



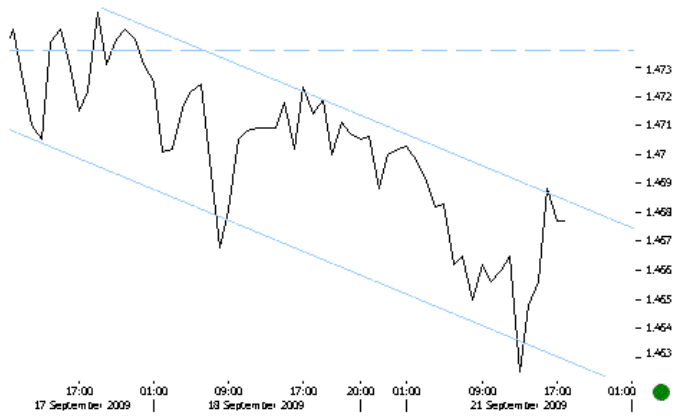
22 SEP 09 - 12:17 EUR WEEKLY 1.48 are key FIB projections. Above 1.48 there is no resistance till 1.5-1.52.



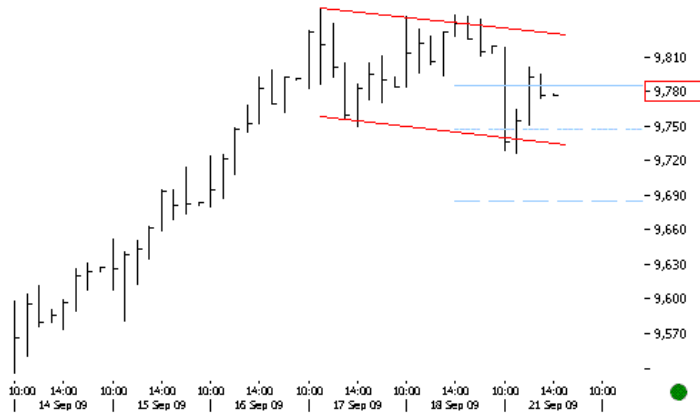
22 SEP 2009 - 11:52 GOLD 60MIN HAPPENED The very fact the prices retraced marginally suggests that the ongoing leg could extend. Previous iv also continue to hold. Above 1030 get ready for a move up till 1,100.



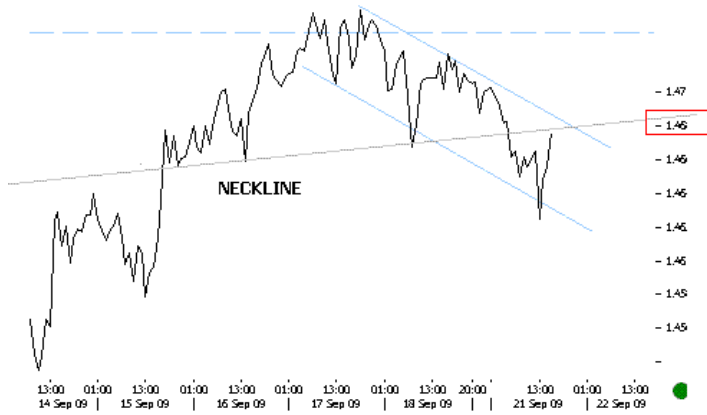
21 SEP 09 - 13:28 GOLD 60MIN ANTICIPATED 21 SEP 2009 It's too soon to call this a reversal on GOLD. We need a clear break below previous iv levels at 990-985 to look for any sustained weakness on GOLD.



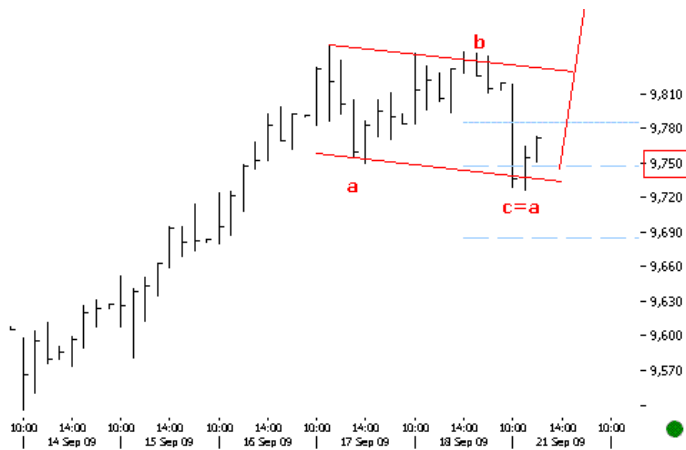
21 SEP 09 - 18:01 EUR The channel prices hold.



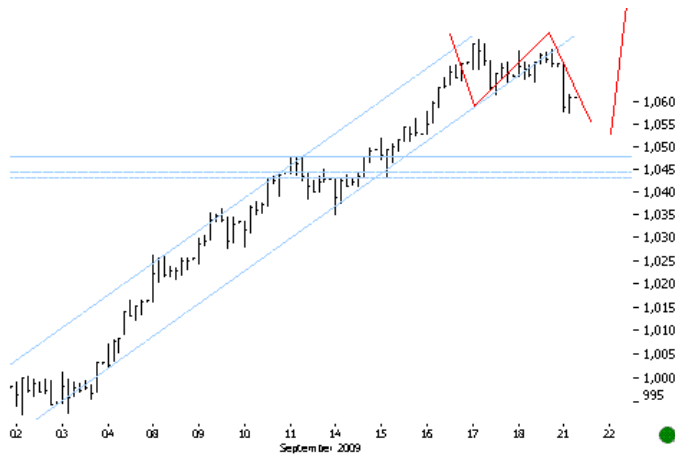
21 SEP09 -18:02 DOW 60MIN sideways action continues.



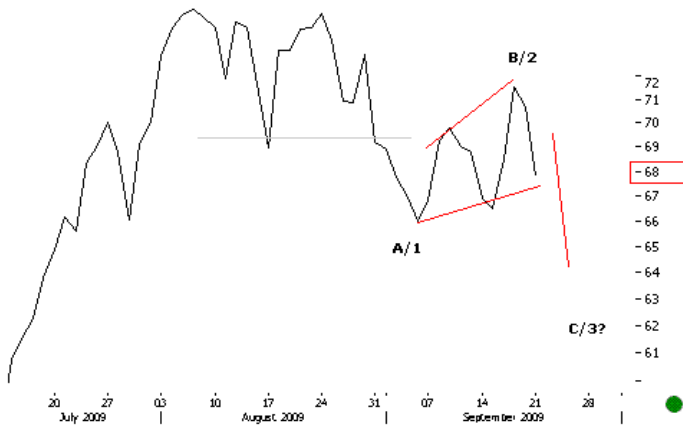
21 SEP 09 - 16:16 EUR 60MIN Prices make a conventional Head and Shoulder pattern. Key levels lie at 1.47. If the reversal is here, respective levels should hold.



21 SEP 09- 16:12 DOW 60MIN The subminor FLAT A-B-C is over. Above 9750 get ready for 10,000.



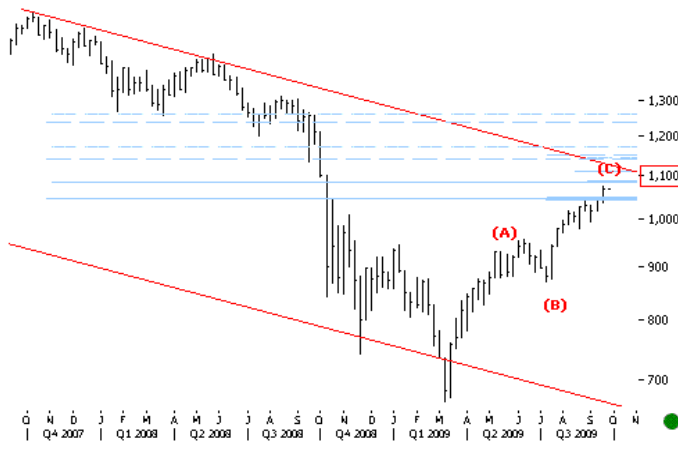
21 SEP 09 - 16:00 GSPC 60MIN S\$P500 moved down as anticipated. Above 1060 the corrective down is considered complete. Now the final upleg should begin.



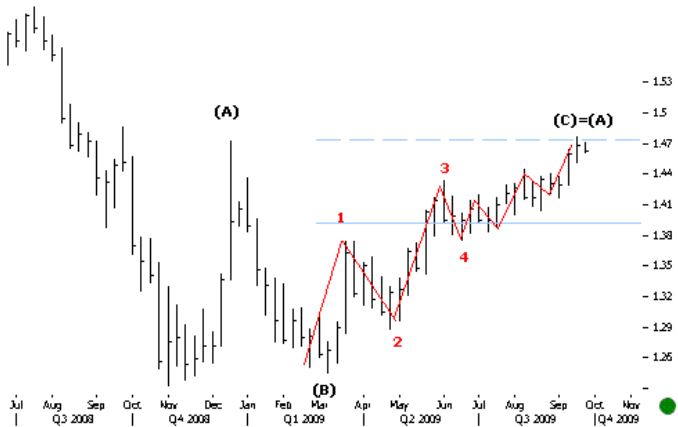
21 SEP 09 - 15:56 BRENT DAILY Our preferred view on brent continues to point lower to sub 60 levels.



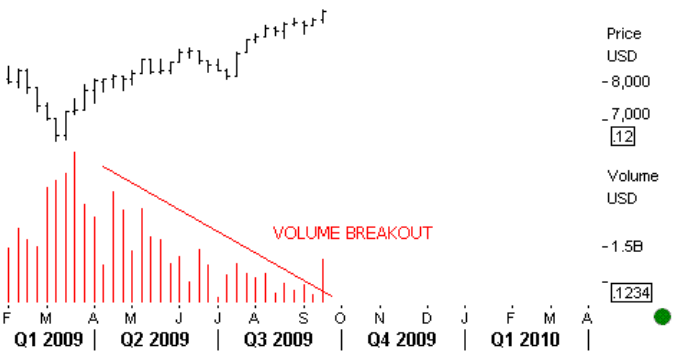
21 SEP 09 - 13:58 GSPC 60MIN Even if we have further upside (which looks likely) today an early morning subminor dip back to 1061 can not be ruled out.



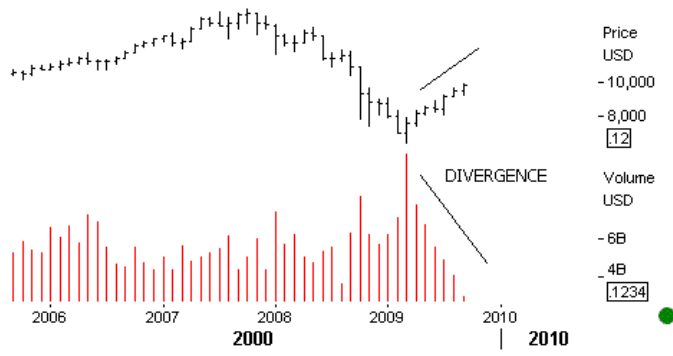
21 SEP 09 - 13:48 GSPC WEEKLY We have no reversal yet, but still the current upmove seems to be a counter trend. We don't see prices moving through the 1100 resistance, which should be followed by a reversal back to 1000.



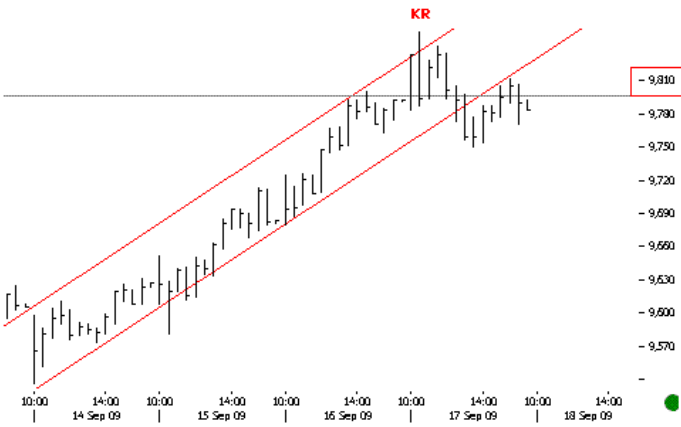
13:34 EURUSD WEEKLY The flat on EUR DOLLAR seems over. We could be in for a large intermediate multi week reversal.



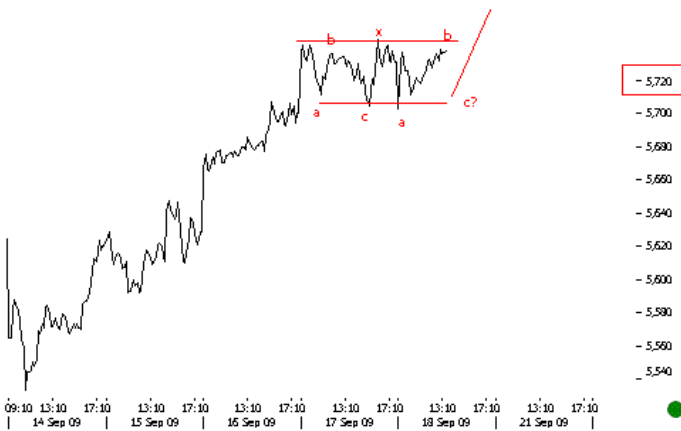
GMT12:50 DOW WEEKLY VOLUME ..here we have a breakout, which conflicts with the monthly volume non confirmation. Key levels to watch continue to lie at 9800



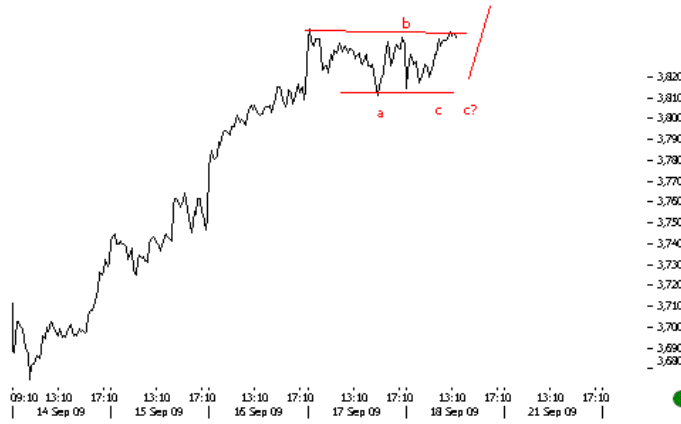
GMT 12:48 DOW VOLUME The divergence on monthly volume could be considered exhausting for DOW as suggested....



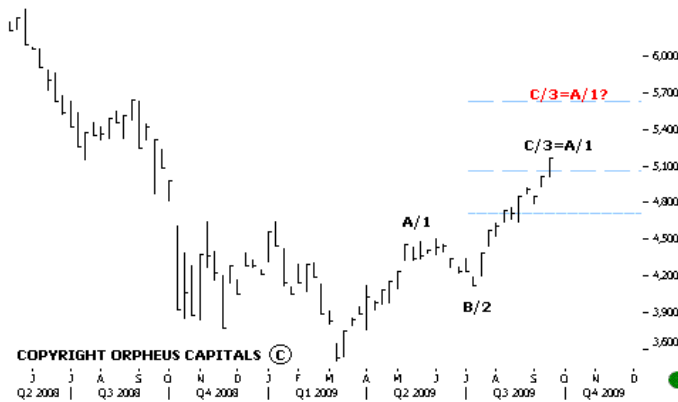
18 sep 09 DOW KEY REVERSAL ...This is a 30 MIN DOW. Which has a KEY REVERSAL bar and is retesting the MINOR channel. Conclusion DOW 9800 is KEY and let's not forget DOW 10,000 is a big psychological level for global equity



18 SEP 09 DAX CORRECTIVE ...dax still looks like an elliott corrective and should push higher



18 SEP 09 CAC CORRECTIVE ...similar corrective is on cac



18 SEP 09 FTSE PROJECTIONS FTSE on intermediate time frame has crossed key fib levels. 5,700 might look shocking now, but above 5,100 we don't have a resistance till 5,700

Prepared by

Domnita Pascut, Cristina Crisan, Mukul Pal, Florin Ilea, Orpheus CAPITALS

For subscription inquiries mail to: support@or-phe-us.com This document is not for public distribution and has been furnished to you solely for your information and may not be reproduced or redistributed to any other person. The manner of circulation and distribution of this document may be restricted by law. Persons into whose possession this document may come are required to inform themselves of, and to observe, such restrictions. This material is for the personal information of the authorized recipient, and we are not soliciting any action based upon it. This report is not to be construed as an offer to sell or the solicitation of an offer to buy any security in any jurisdiction where such an offer or solicitation would be illegal. No person associated with Orpheus CAPITALS is obligated to call or initiate contact with you for the purposes of elaborating or following up on the information contained in this document. The material is based upon information that we consider reliable, but we do not represent that it is accurate or complete, and it should not be relied upon as such. Neither Orpheus CAPITALS, nor any person connected with Orpheus CAPITALS, accepts any liability arising from the use of this document. The recipient of this material should rely on their own investigations and take their own professional advice. Opinions expressed are our current opinions as of the date appearing on this material only. While Orpheus CAPITALS endeavor is to update on a reasonable basis the information discussed in this material, there may be regulatory, compliance, or other reasons that prevent him from doing so. Prospective investors and others are cautioned that any forward-looking statements are not predictions and may be subject to change without notice. No part of this material may be duplicated in any form and/or redistributed without prior written consent. In so far as this report includes current or historical information, it is believed to be reliable, although its accuracy and completeness cannot be guaranteed.

TICKS.GLOBAL

SEP 2009

Back